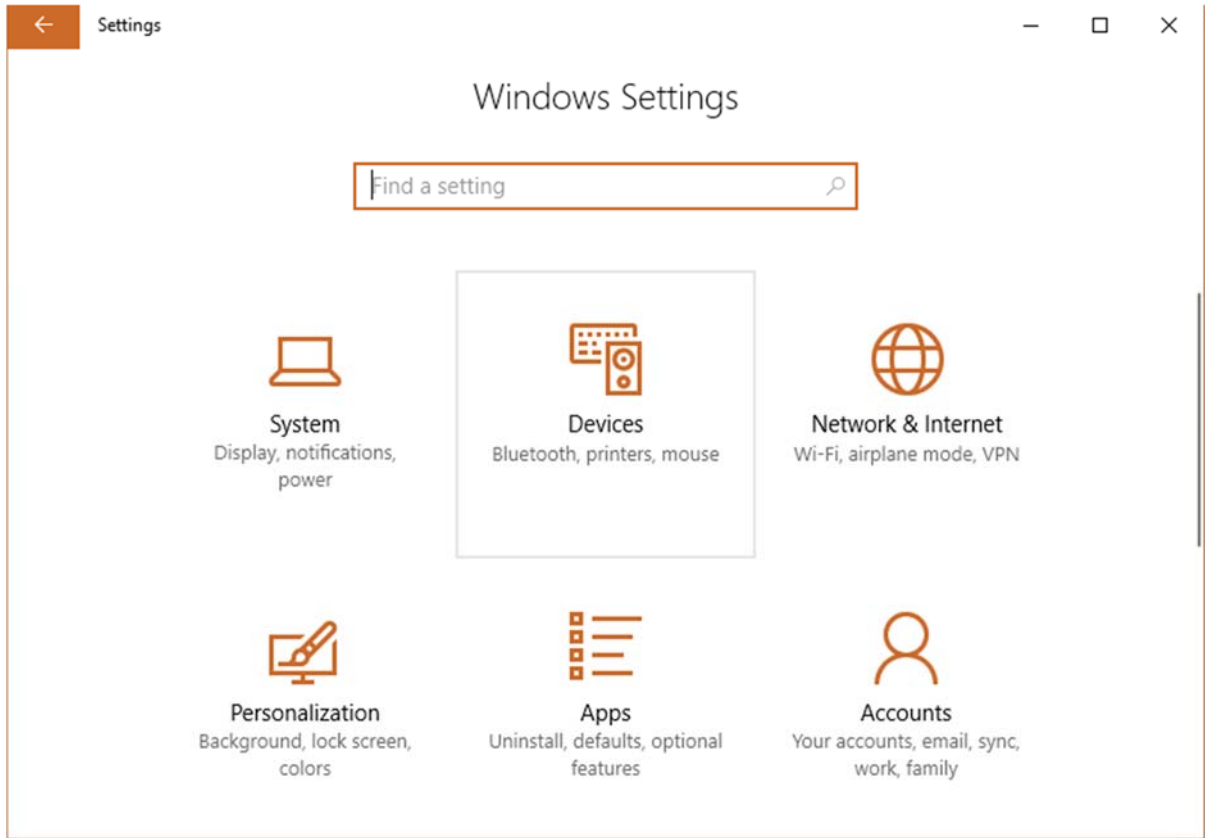
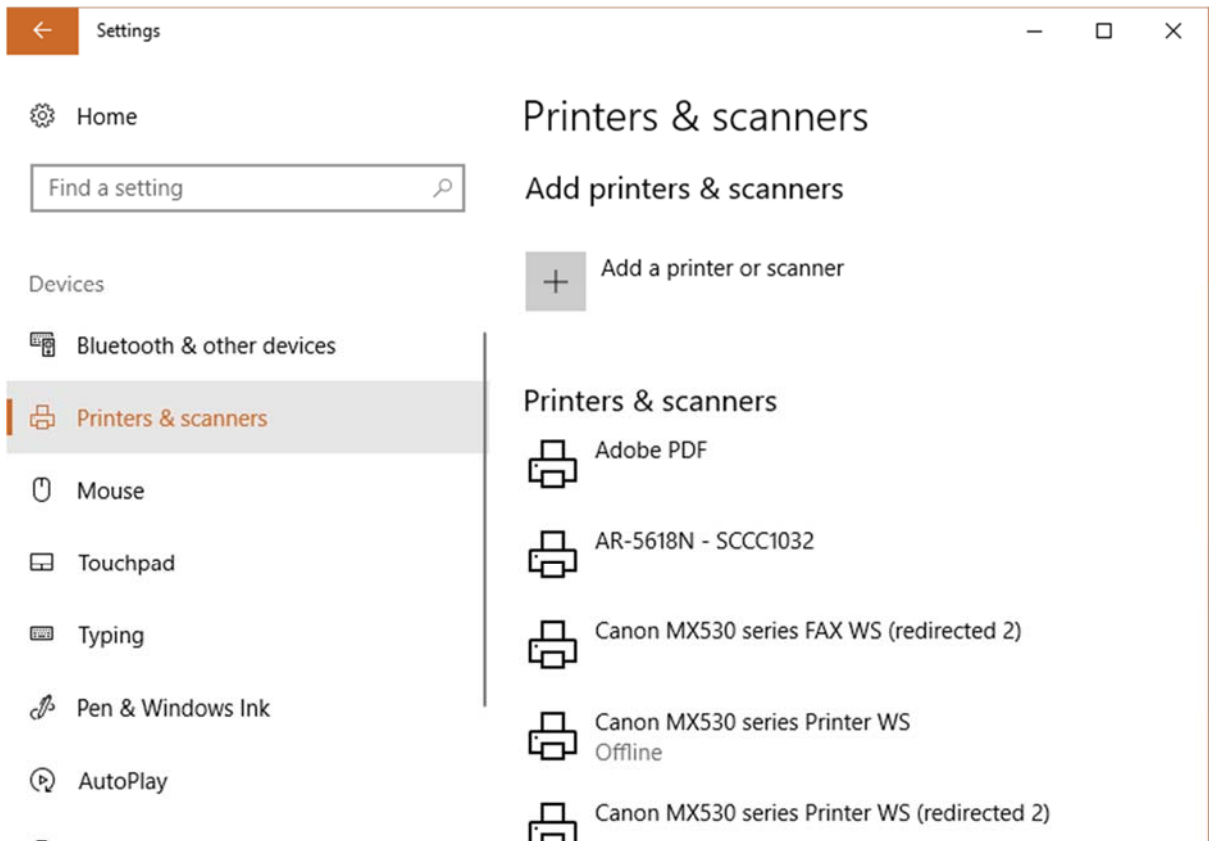


SHARP AR-5618N (195.251.203.222, sharp.space.noa.gr), 2nd floor, Laser Printer/scanner/photocopier, B&W, double-sided WINDOWS 10 setup

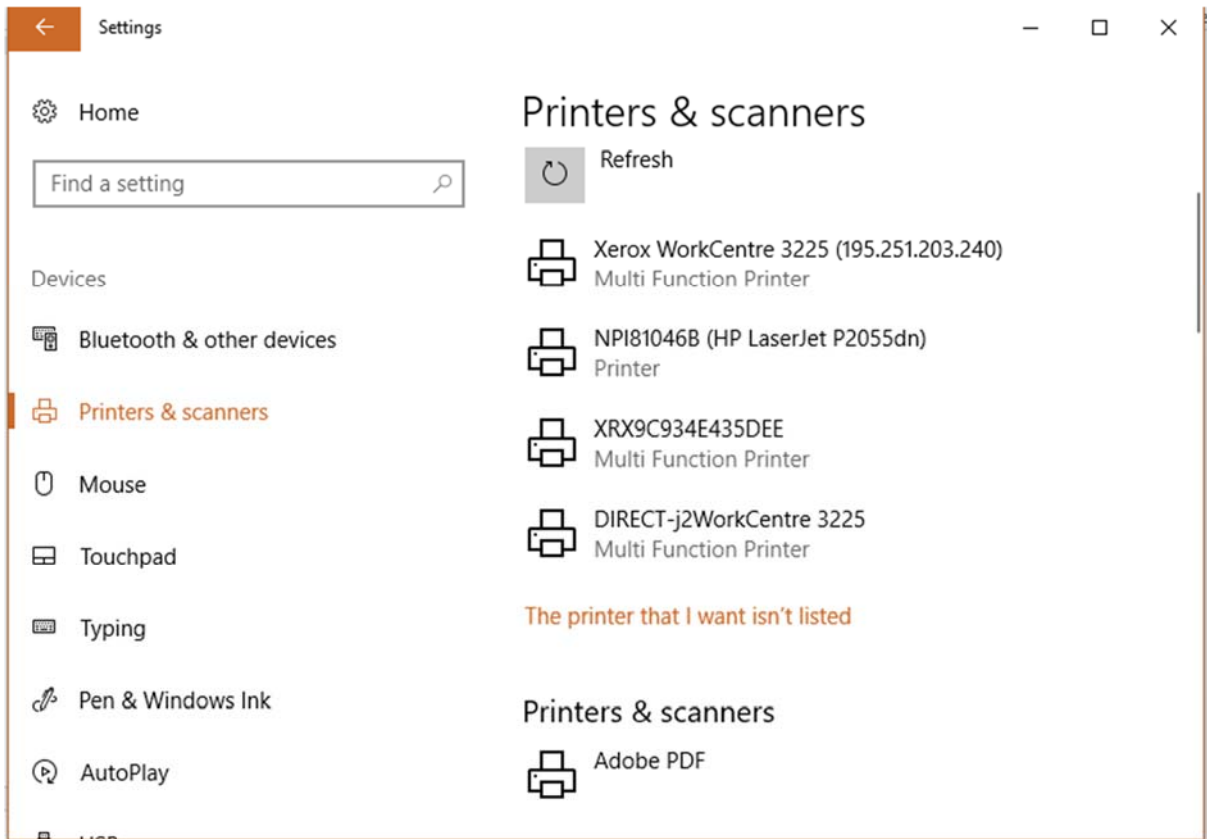
Go to windows settings



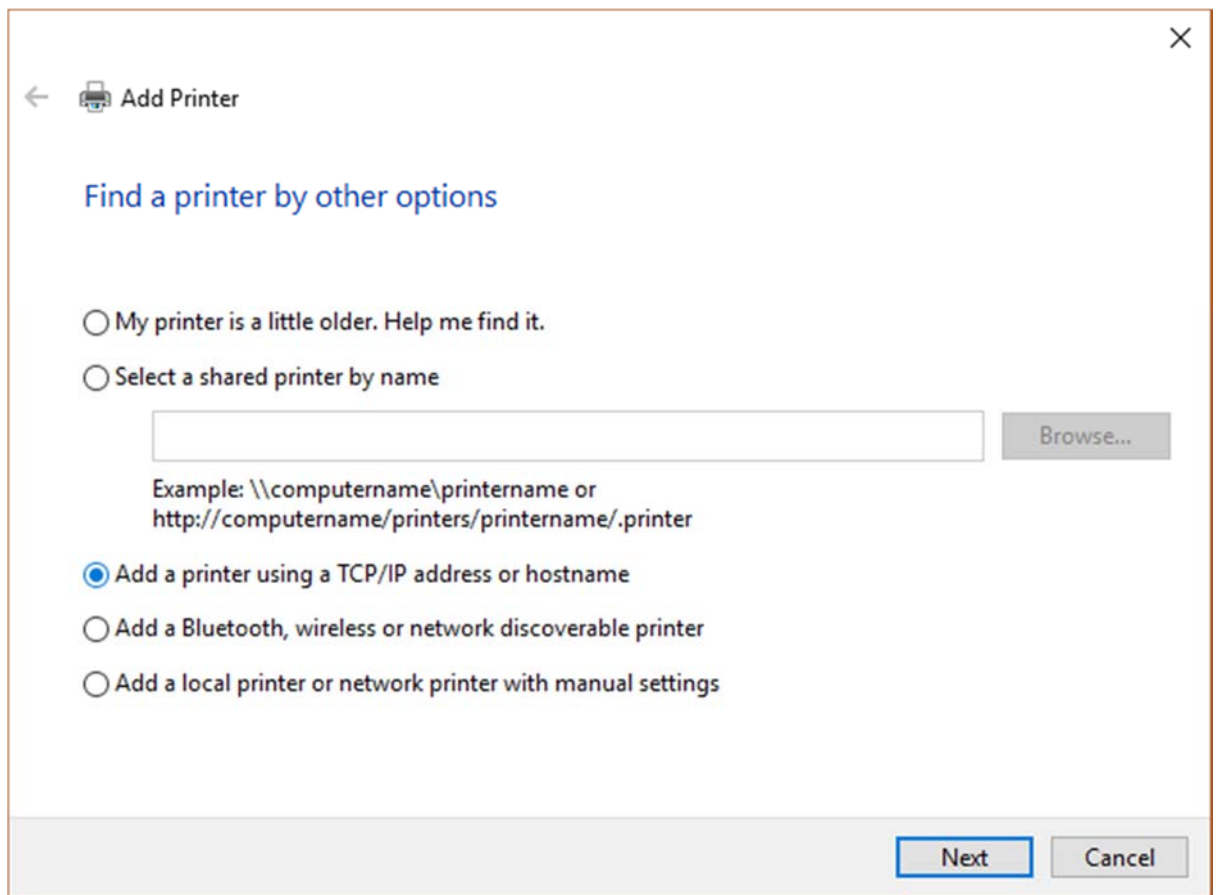
→ *Devices*




- ➔ *Printers & scanners*
- ➔ *Add a printer or scanner*



➔ The printer that I want isn't listed



→ Add a printer using TCP/IP address or hostname → Next

←  Add Printer ×

Type a printer hostname or IP address

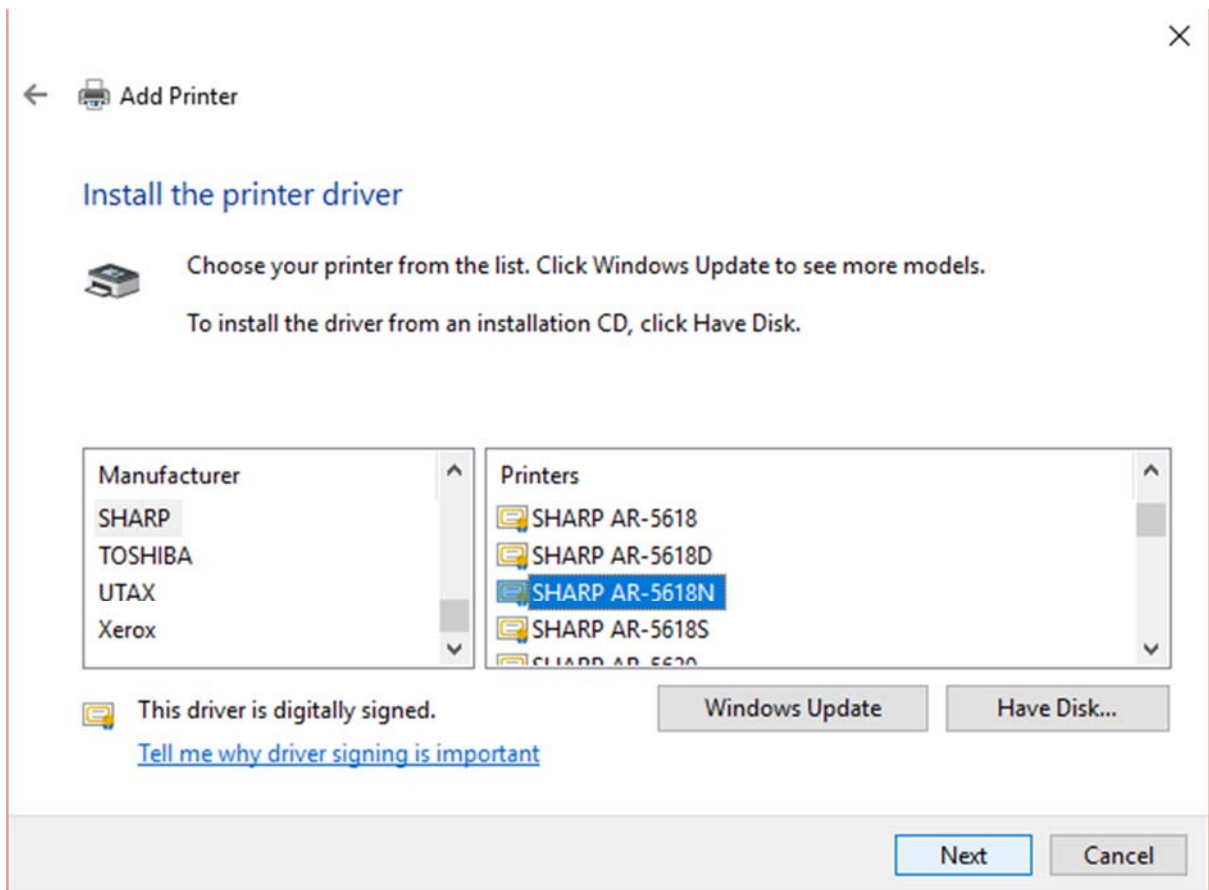
Device type:

Hostname or IP address:

Port name:

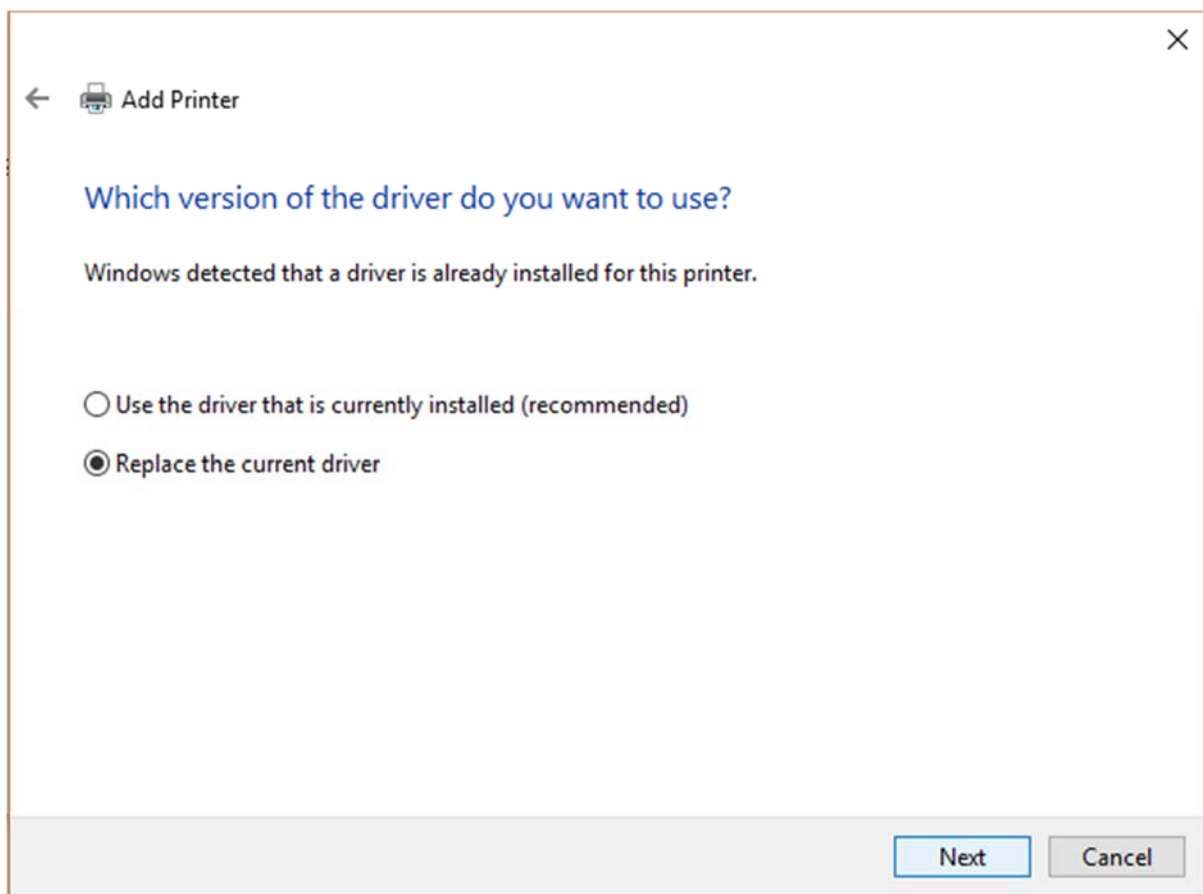
Query the printer and automatically select the driver to use

Fill in → Next




(if the driver doesn't exist press Windows update)

Select SHARP → SHARP AR-5618N → Next



➔ *Replace the current driver* ➔ *Next*


←  Add Printer ×

Type a printer name

Printer name:

This printer will be installed with the SHARP AR-5618N driver.

→ Next

←  Add Printer×

Printer Sharing

If you want to share this printer, you must provide a share name. You can use the suggested name or type a new one. The share name will be visible to other network users.

Do not share this printer

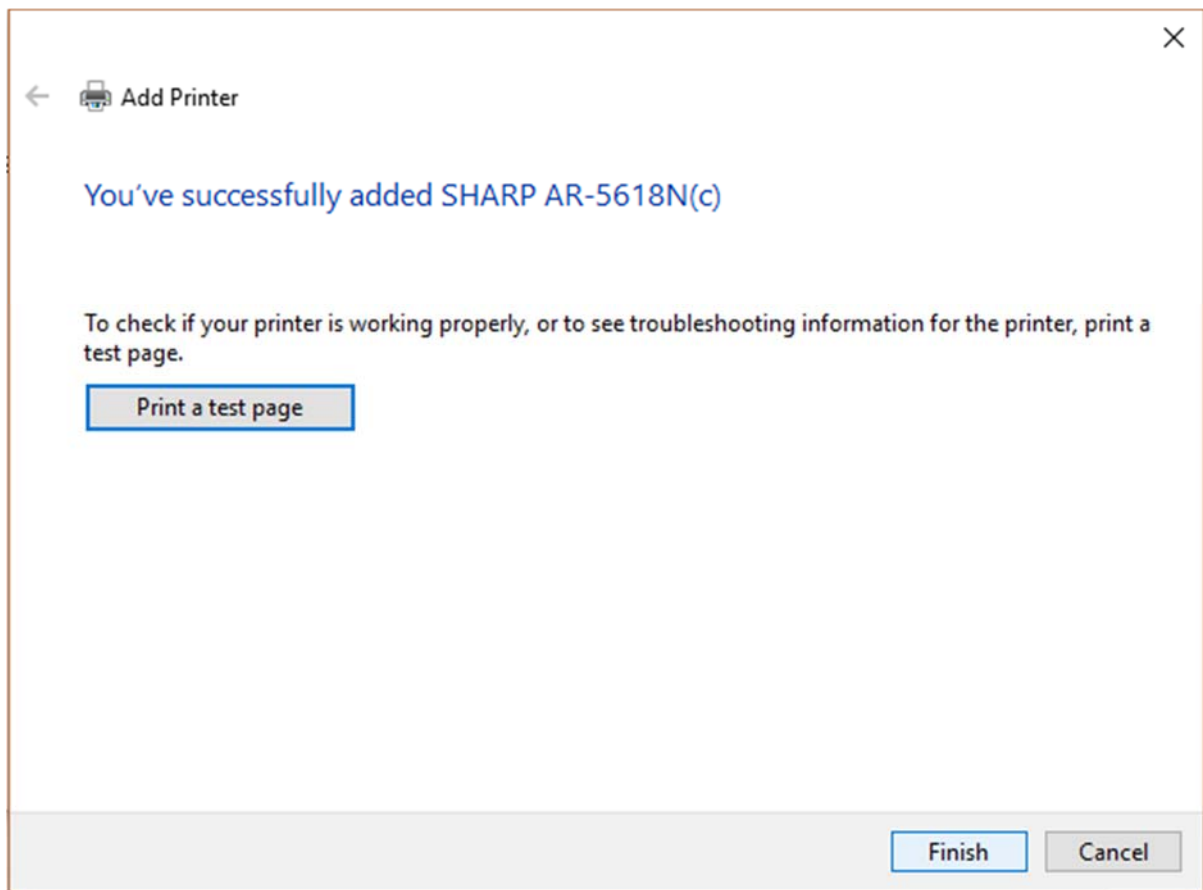
Share this printer so that others on your network can find and use it

Share name:

Location:

Comment:

→ Next



→ *Finish*