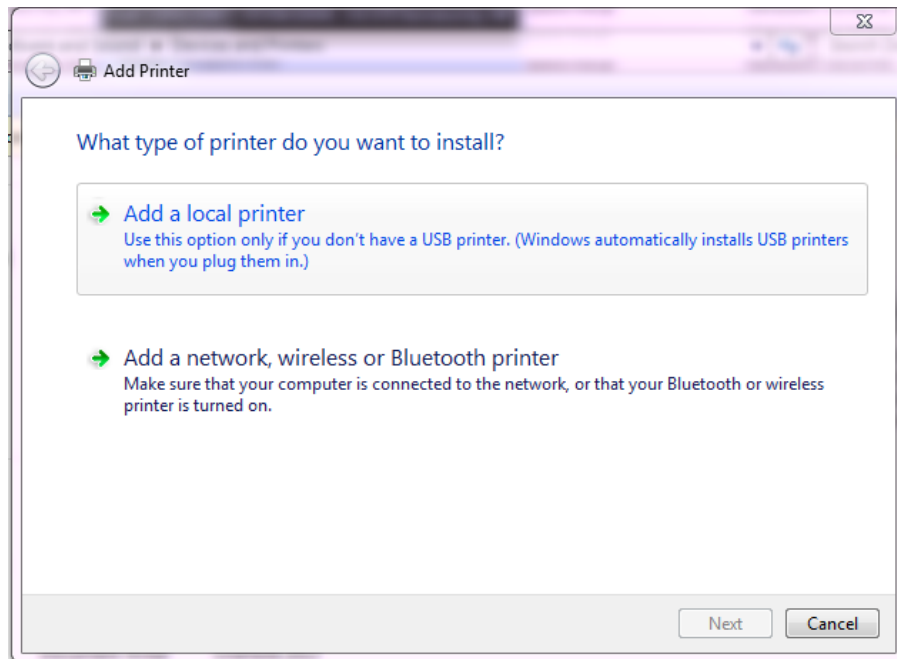


**Driver Installation instructions for the printer Lexmark C720 (color printing), for Windows  
which is located in the 1<sup>st</sup> floor of IAASARS, after the entrance, in the right corridor**

**ver 1en**

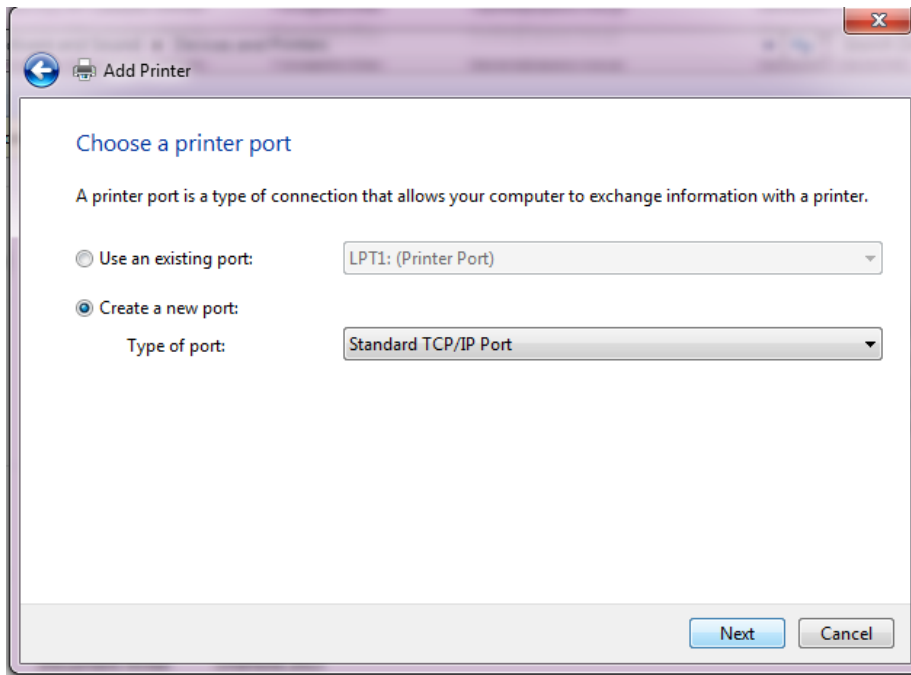
→Devices and Printers

→Add a printer



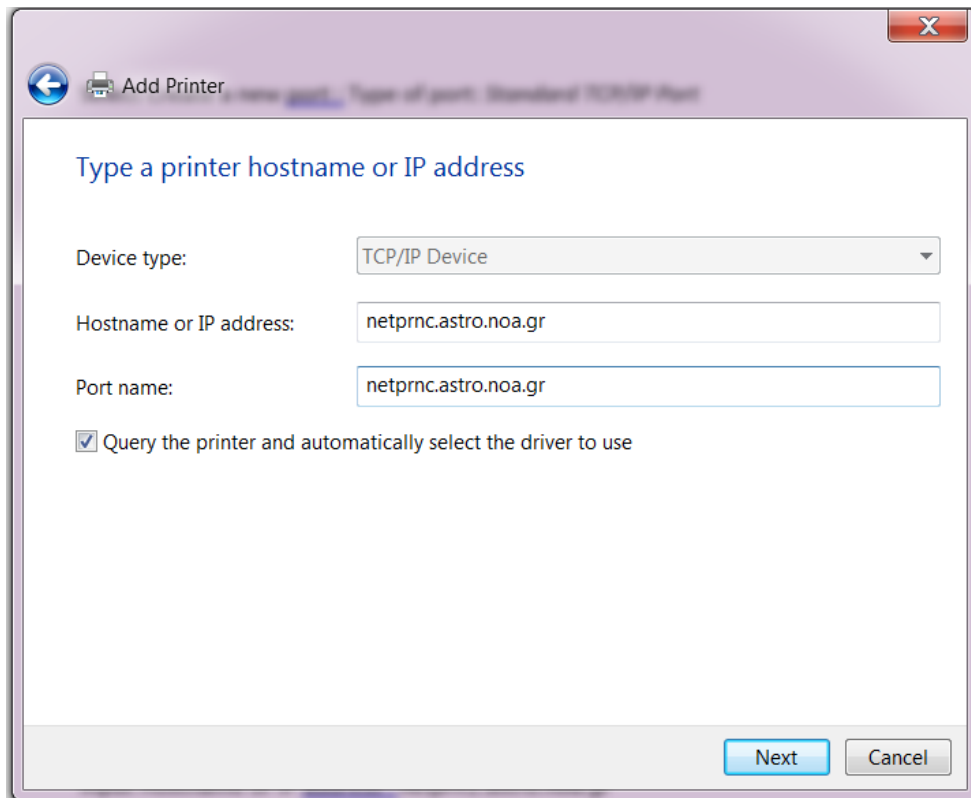
Select : *Add a local printer*

→Next



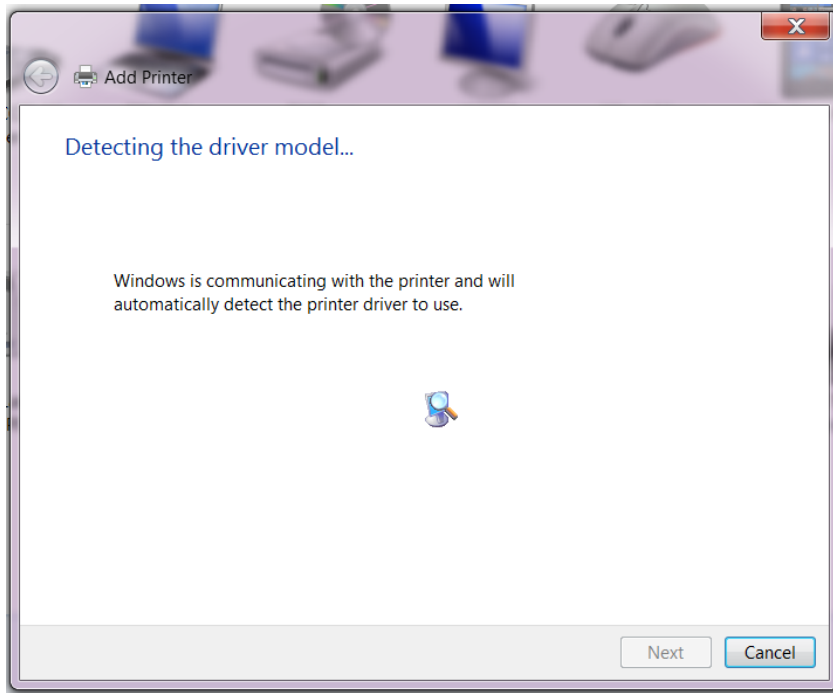
Select Create a new port : Type of port: *Standard TCP/IP Port*

→Next

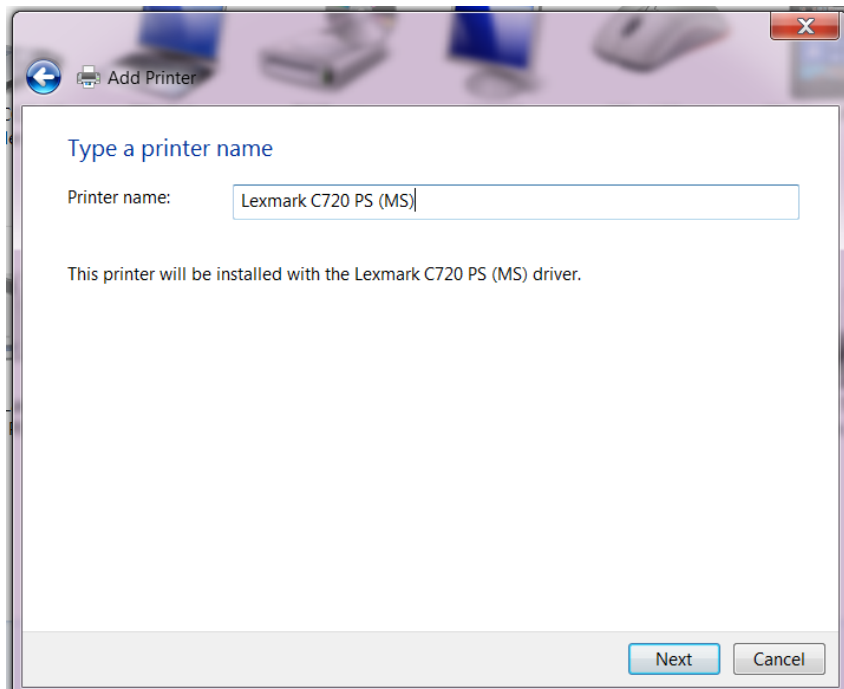


Input Hostname or IP address : *netprnc.astro.noa.gr*

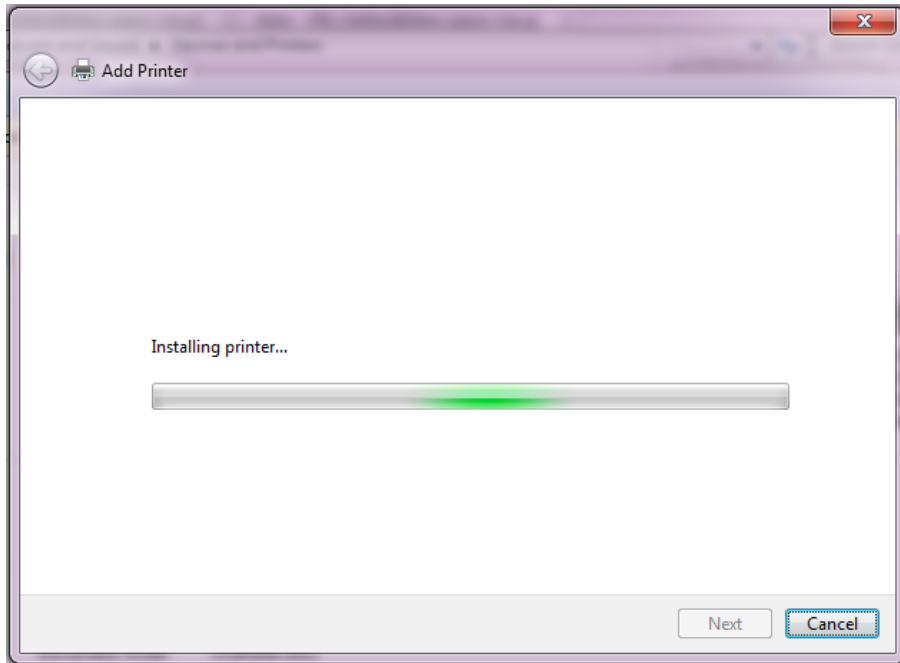
→Next



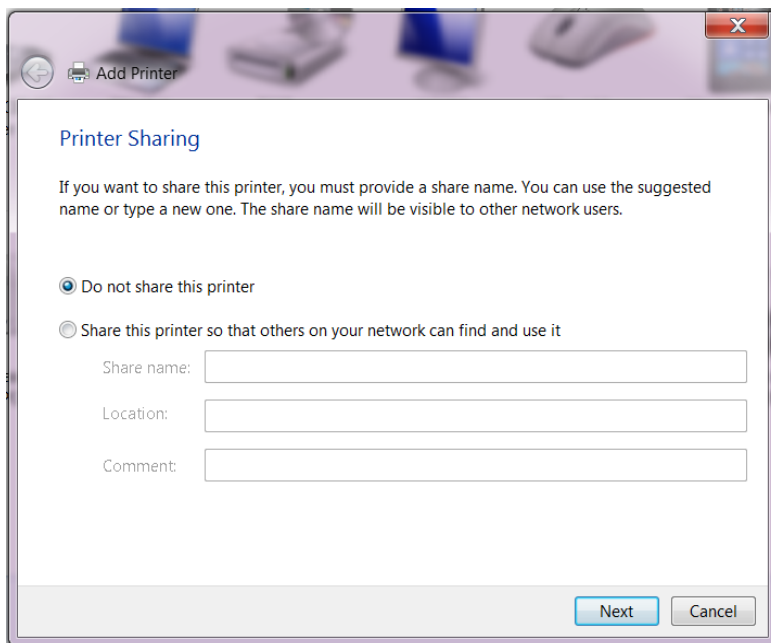
*Wait*



→Next

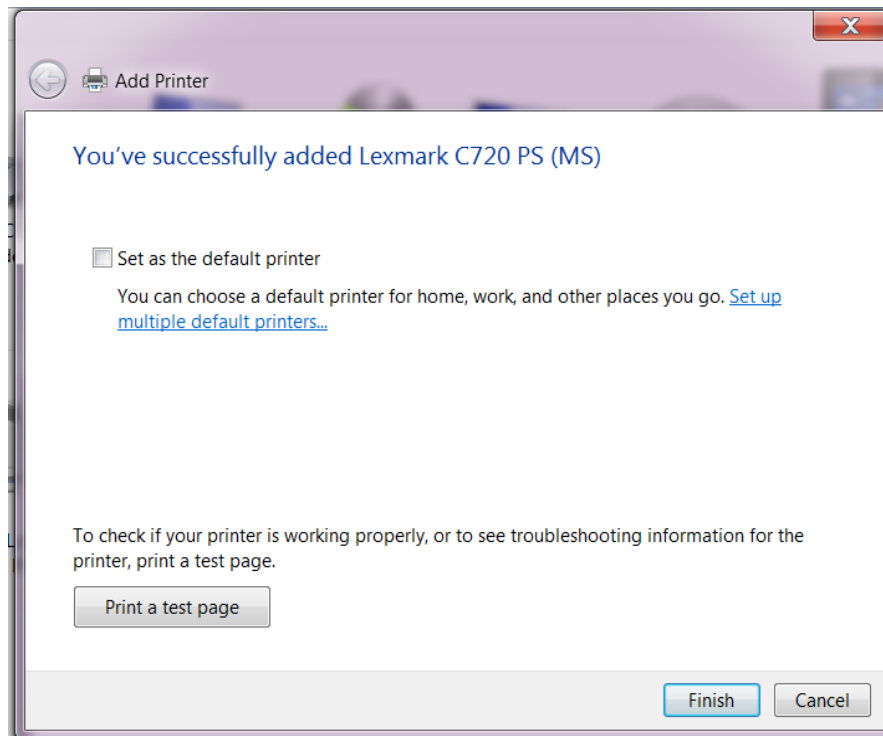


...Wait



Select : *Do not share this printer*

→Next



Select if you wish : *Set as the default printer*

Select if you wish : *Print a test page*

→Finish