

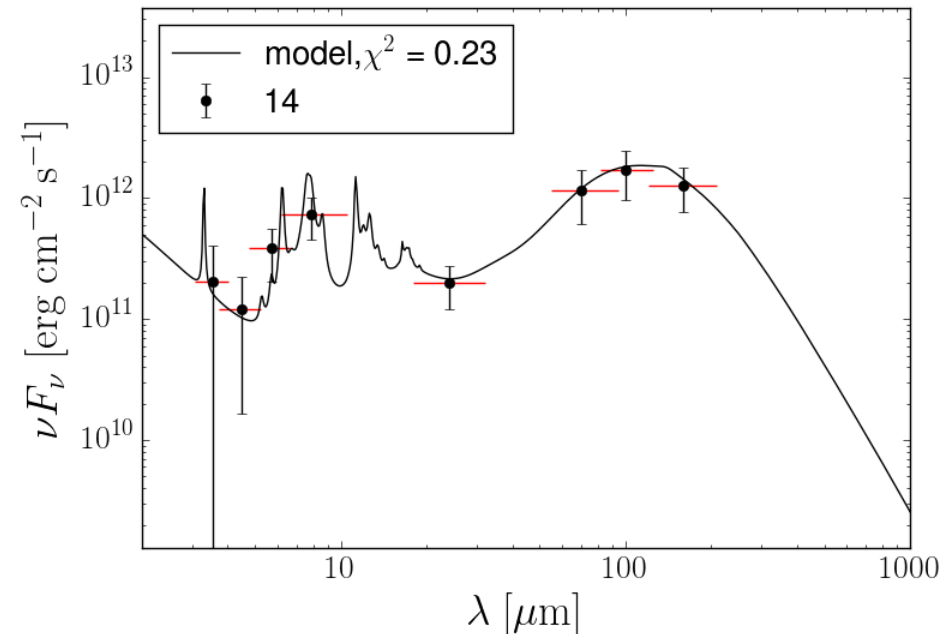
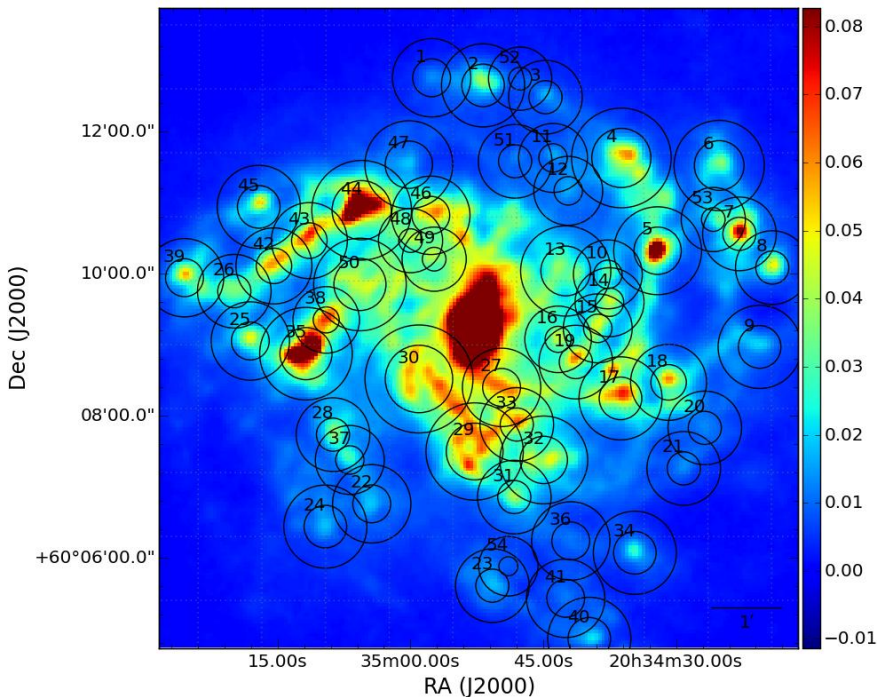
Clarifying relationships between components of the interstellar medium in extragalactic H II complexes

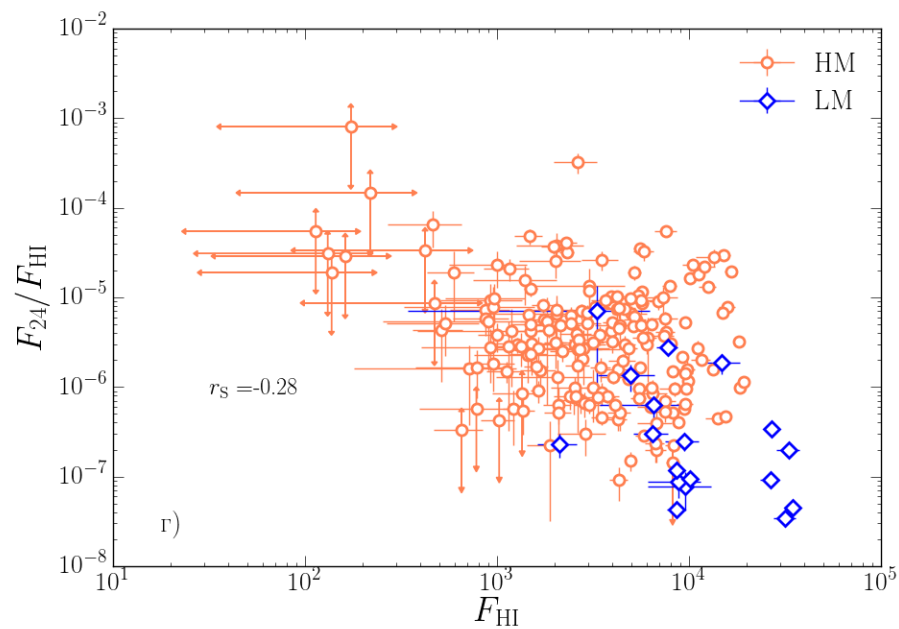
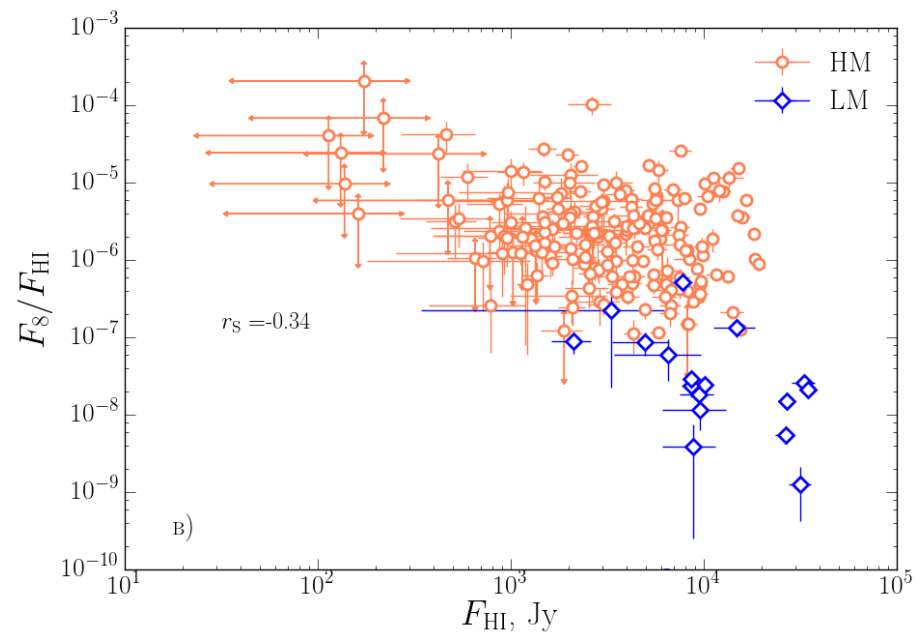
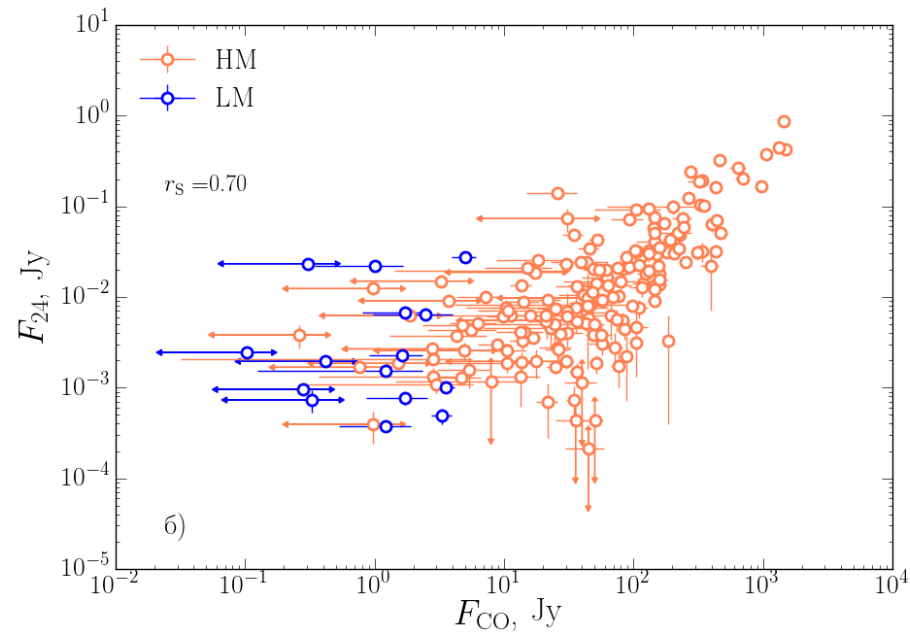
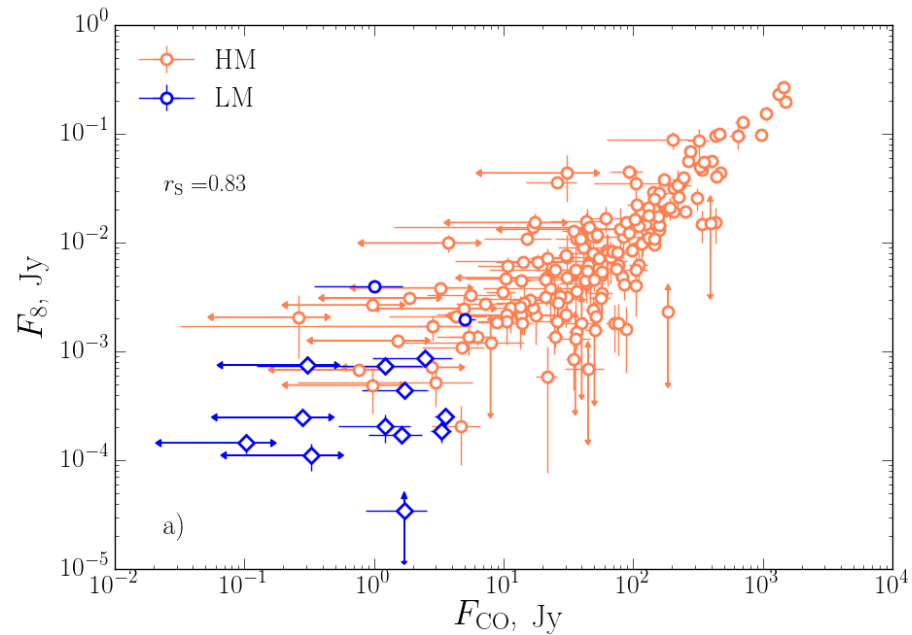
Goal of the work:

- Relating infrared fluxes, 21 cm HI fluxes, CO line fluxes for a large sample of extragalactic HII complexes
- Estimating dust parameters in the complexes, using Draine and Li (2007) dust emission model

- We performed an aperture photometry of more than 300 HII complexes in eleven galaxies
- The dust masses and radiation field parameters are estimated by fitting the infrared spectra.

Range	Data based	Telescope	Resolution
CO (2→1)	Heracles	IRAM	13''
8, 24 μm	SINGS	Spitzer	2'', 6''
70, 160 μm	KINGFISH	Herschel	6'', 12''
H I	THINGS	VLA	7''





Thank you for attention!