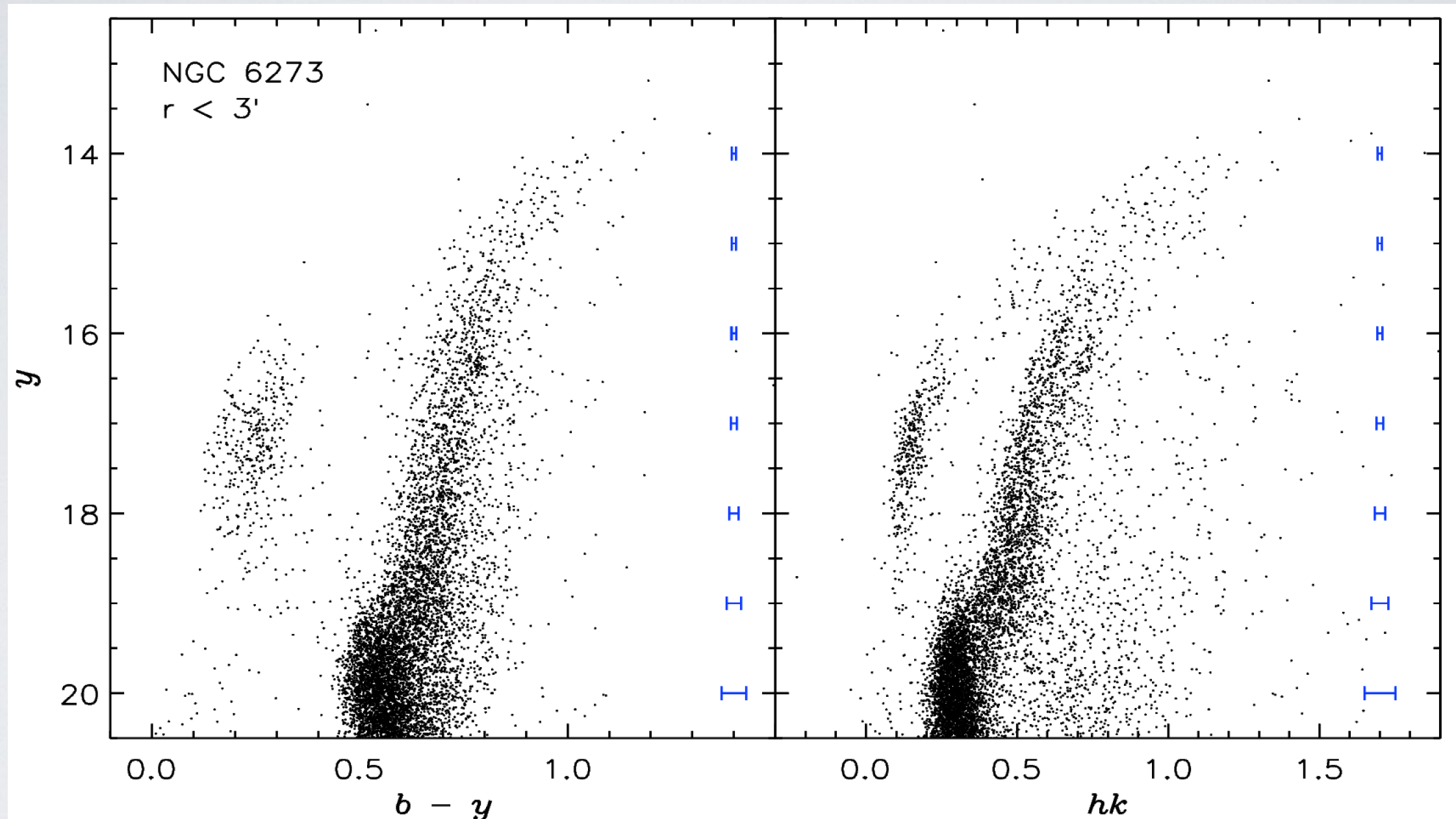


Multiple Populations and Supernova Enrichment in the Globular Cluster NGC 6273



Sang-II Han^{1,2}, Dongwook Lim², Young-Wook Lee²

¹Korea Astronomy and Space Science Institute, Korea

²Center for Galaxy Evolution Research, Yonsei University, Korea

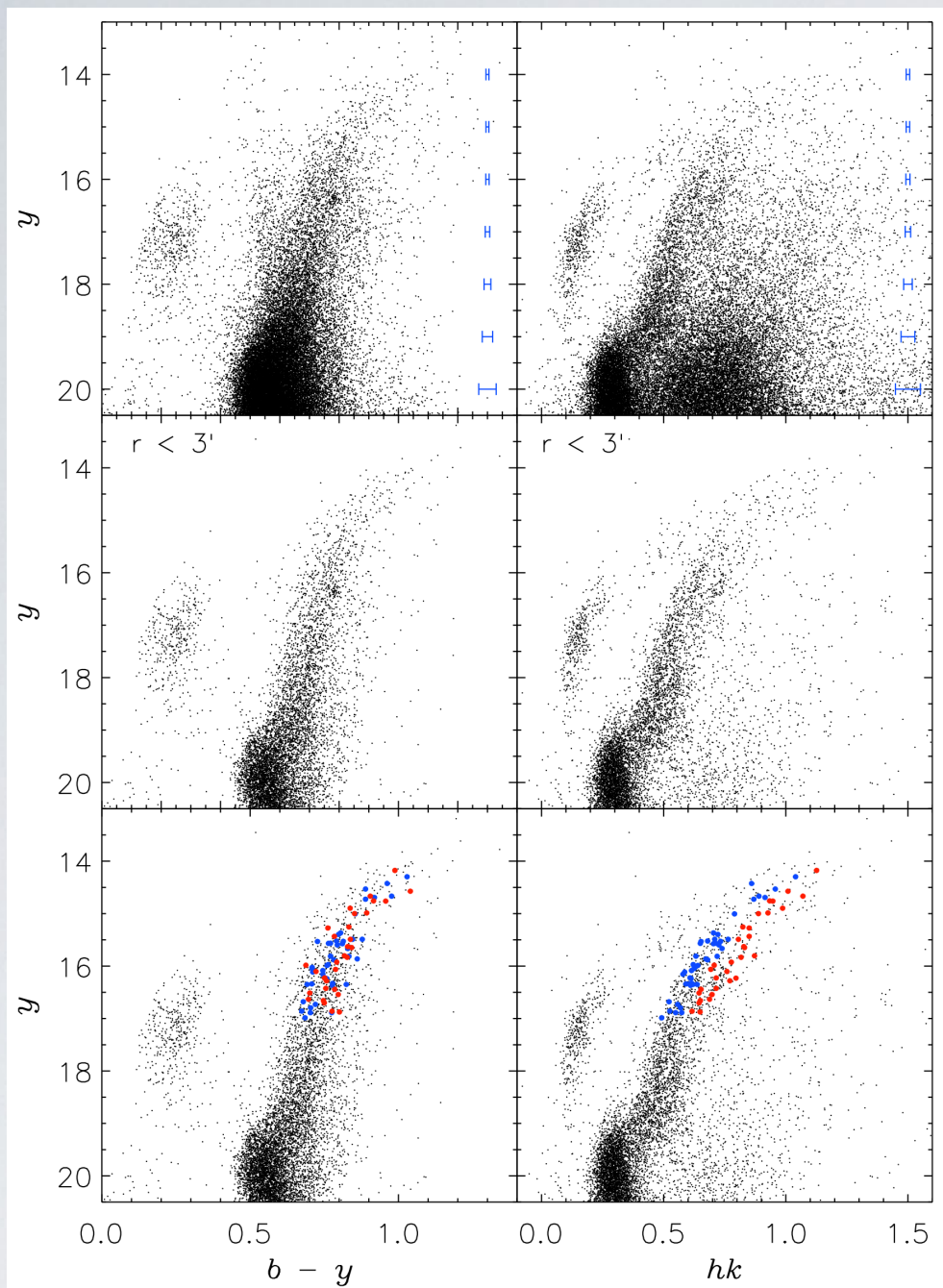


Fig 1 of Han+15

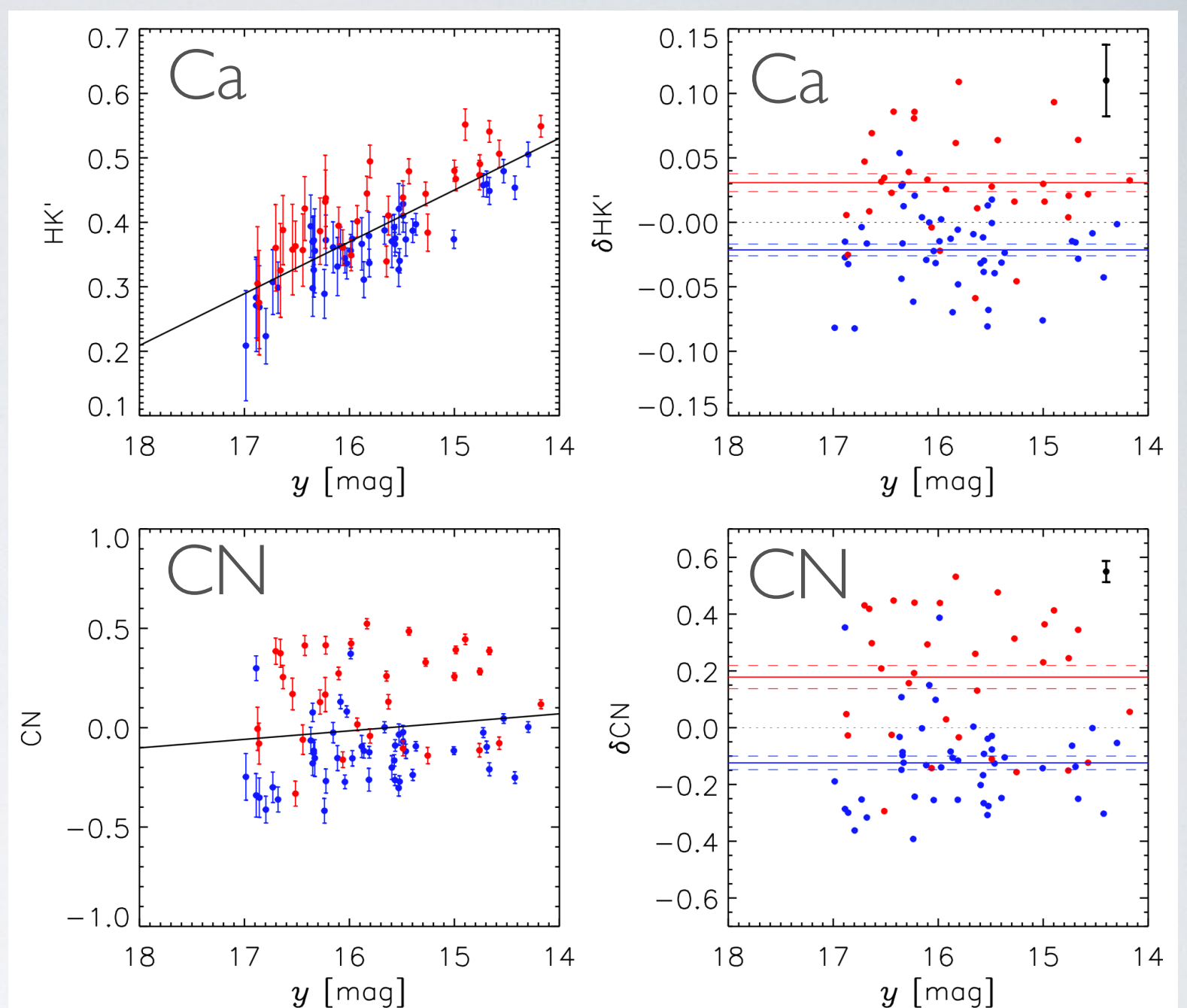


Fig 2 of Han+15

- RGB stars are split into two sequences
- The differences in Ca & CN abundances are shown from the spectroscopy

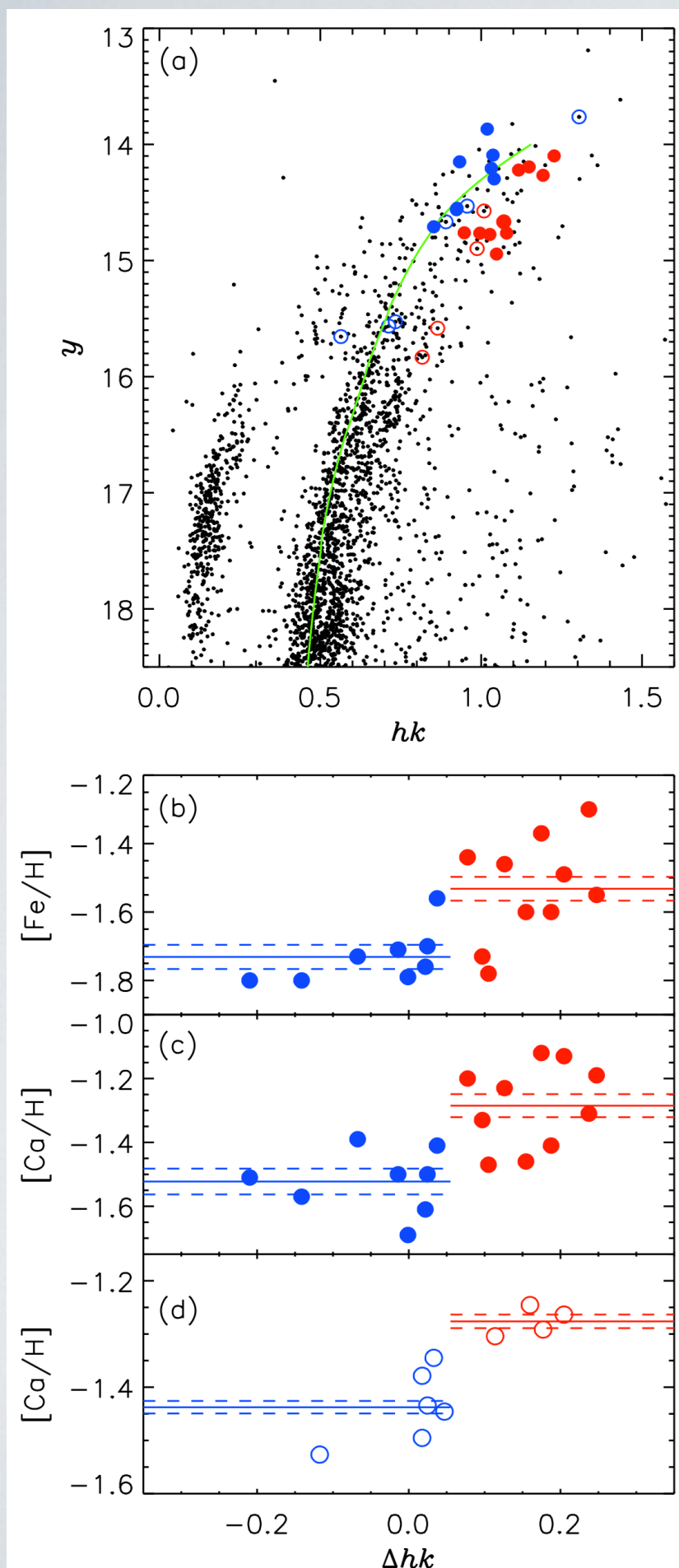


Fig 4 of Han+15

- Cross-matched stars in Johnson et al. (2015; filled circle) and Rutledge et al. (1997; open circle) with our photometry
- ➔ The redder RGB stars are enhanced in Ca & Fe
- The positive CN-CH correlation might be a ubiquitous nature of GCs more strongly affected by SNe (See Lim et al. 2015; Han et al. 2015)
- These suggest that NGC 6273 was massive enough to retain SN ejecta